

中华人民共和国 建设项目 用地预审与选址意见书

电子备案号：
3702112024XS0038463
用字第 370201202415006 号

根据《中华人民共和国土地管理法》《中华人民共和国城乡规划法》和国家有关规定，经审核，本建设项目符合国土空间用途管制要求，核发此书。

核发机关

日期 二〇二四年四月十六日



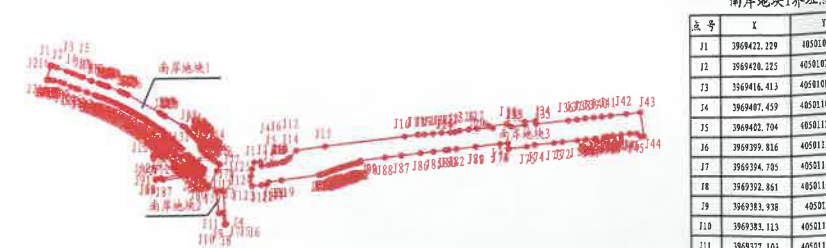
基本情况	项目名称	沿风河快速路东延工程
	项目代码	2308-370211-04-01-115794
	建设单位名称	青岛西海岸新区建筑工务中心
	项目建设依据	道路用地
	项目拟选位置	青岛西海岸新区滨海大道西、世纪大道北
	拟用地面积 (含各地类明细)	总用地面积 130265 m ² (道路用地)。其中，北岸 65662 m ² ，南岸 64603 m ² 。

附图及附件名称



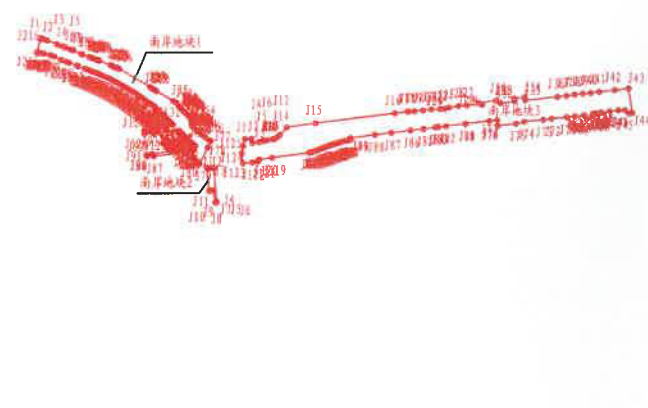
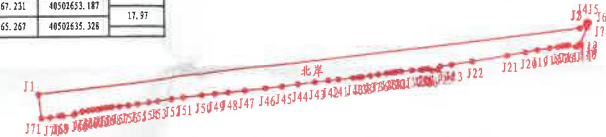
附图：

北岸界址点坐标表				北岸界址点坐标表				北岸界址点坐标表			
点号	X	Y	边长	点号	X	Y	边长	点号	X	Y	边长
11	396865.758	4050242.373	1295.11	220	396978.578	40503616.941	43.95	239	3969728.648	40503223.957	13.98
12	3968843.286	40503745.004	10	221	3969780.137	40503573.627	83.17	240	3969727.165	40503210.046	34.38
13	3968654.405	40503739.481	4.82	222	3969756.754	40503491.537	49.37	241	3969723.524	40503173.86	22.55
14	3968958.128	40503751.4	2.36	223	3969758.884	40503442.881	27.72	242	3969720.933	40503152.446	21.96
15	3968817.528	40503763.799	11.85	224	3969754.677	40503415.859	9.49	243	3969717.025	40503120.721	46.81
16	3968956.128	40503757.087	43.4	225	3969746.726	40503410.374	14.96	244	3969711.937	40503080.274	38.12
17	3968845.27	40503752.273	11.85	226	3969744.992	40503396.448	11.71	245	3969706.962	40503042.437	49.31
18	3968865.12	40503744.769	43.4	227	3969748.93	40503386.27	10	246	3969702.9	40503004.133	38.53
19	3968865.231	40503743.77	2.16	228	3969748.689	40503376.542	5.98	247	3969697.85	40502955.075	49.31
20	3968802.064	40503742.176	1.5	229	3969746.862	40503370.61	20.98	248	3969693.553	40502915.339	36.58
21	3968800.974	40503740.853	5.32	230	3969744.591	40503349.703	26.15	249	3969689.974	40502874.928	31.21
22	3968799.245	40503735.819	0.82	231	3969742.66	40503313.684	11.74	250	3969687.93	40502835.747	45.13
23	3968799.238	40503735.841	18.02	232	3969741.613	40503311.968	2.73	251	3969683.524	40502800.831	28.73
24	3968803.363	40503731.302	6.72	233	3969741.334	40503308.753	8.15	252	3969680.673	40502778.241	35.01
25	3968802.515	40503731.646	6.65	234	3969740.137	40503301.69	11.79	253	3969677.189	40502745.401	22.07
26	3968801.321	40503726.088	11.95	235	3969738.411	40503290.824	20.12	254	3969674.96	40502722.449	27.43
27	3968799.375	40503693.283	18.4	236	3969735.5	40503270.114	18.69	255	3969671.961	40502694.18	21.82
28	3968796.919	40503675.86	29.72	237	3969732.736	40503251.618	28	256	3969669.374	40502674.486	21.43
29	3968792.689	40503644.455	27.97	238	3969729.182	40503231.893	7.99	257	3969667.231	40502653.187	17.97
30	3968787.578	40503616.941		239	3969728.648	40503223.952		258	3969665.267	40502635.228	



南岸地块1界址点		
点号	X	Y
11	3968422.229	40501872
12	3968428.225	40501872
13	3968416.413	40501887
14	3968407.459	40501887
15	3968402.704	40501887
16	3968399.816	40501887
17	3968394.785	40501887
18	3968392.861	40501887
19	3968383.938	40501887
20	3968383.115	40501887
21	3968377.163	40501887

北岸界址点坐标表				北岸界址点坐标表				北岸界址点坐标表				北岸界址点坐标表			
点号	X	Y	边长	点号	X	Y	边长	点号	X	Y	边长	点号	X	Y	边长
J1	396749.758	40502462.373	1291.11	J20	396787.518	40502616.941	43.95	J39	3967728.648	40502723.952	13.98	J58	3969465.267	40502635.338	12.51
J2	3969443.286	40503745.024	18	J21	396780.137	40502573.527	83.17	J40	396727.165	40502710.946	34.38	J59	3969663.899	40502622.895	10.91
J3	3969454.083	40503159.481	4.82	J22	396766.764	40503491.537	49.37	J41	396722.224	4050175.86	23.56	J60	3969662.611	40502612.061	8.13
J4	3969458.628	40503761.4	2.24	J23	396758.884	40503442.881	27.27	J42	396720.933	40503152.466	31.96	J61	3969661.23	40502604.854	12.37
J5	3969457.528	40503763.799	3.5	J24	396754.612	40503415.839	9.49	J43	396717.825	40503120.721	40.81	J62	3969659.17	40502591.854	11.97
J6	3969456.128	40503767.007	11.85	J25	396746.926	4049410.374	14.06	J44	396711.927	40503080.234	38.12	J63	3969657.289	40502580.016	13.97
J7	3969445.27	40503502.373	43.8	J26	396744.992	40503376.448	11.31	J45	396706.962	40503042.437	38.53	J64	3969654.563	40502566.332	17.87
J8	3969435.12	40503744.769	2.16	J27	396749.93	40503386.27	10	J46	396702.8	40503084.133	49.31	J65	3969658.205	40502548.902	4.31
J9	3969435.231	40503743.72	1.5	J28	396747.609	40503376.542	5.38	J47	396697.85	40502955.975	39.93	J66	3969647.091	40502545.918	26.11
J10	3969402.064	40503742.776	2.21	J29	396746.862	40503370.61	28.98	J48	396693.953	40502915.339	30.58	J67	3969644.109	40502519.975	2.21
J11	3969400.374	40503740.853	5.32	J30	396744.991	40503349.709	26.15	J49	396689.974	40502854.908	31.31	J68	3969643.083	40502517.996	6.58
J12	3969399.245	40503735.819	0.01	J31	396742.66	40503321.664	11.74	J50	396687.93	40502853.747	45.13	J69	3969644.239	40502511.473	21.24
J13	3969399.238	40503735.841	18.82	J32	396741.613	40503311.968	2.23	J51	396683.524	40502808.831	28.73	J70	3969640.816	40502498.411	21.58
J14	3969393.363	40502718.302	6.72	J33	396741.334	40503309.753	8.15	J52	396680.673	40502783.241	35.81	J71	3969638.93	40502468.91	57.2
J15	3969402.315	40503711.666	6.65	J34	396740.137	40503301.69	11.79	J53	396677.199	40502745.401	22.07	J72	3969635.758	40502462.373	
J16	3969400.321	40503705.088	11.93	J35	396738.411	40503290.824	20.12	J54	396674.96	40502723.449	27.43				
J17	3969399.575	40503693.283	19.5	J36	396735.5	40503270.114	18.89	J55	396671.961	40502696.18	21.82				
J18	3969396.919	40503673.86	29.72	J37	396732.796	40503251.619	20	J56	396669.574	40502674.486	21.43				
J19	3969392.689	40503644.455	27.97	J38	396729.502	40503231.893	7.99	J57	396667.231	40502653.187	17.97				
J20	3969387.578	40503616.941		J39	396728.648	40503223.952		J58	396665.267	40502635.338					



南岸地块1界址点坐标表				南岸地块1界址点坐标表				地块1界址点坐标表				南岸地块1界址点坐标表				南岸地块1界址点坐标表				南岸地块1界址点坐标表				南岸地块1界址点坐标表							
点号	X	Y	边长	点号	X	Y	边长	点号	X	Y	边长	点号	X	Y	边长	点号	X	Y	边长	点号	X	Y	边长	点号	X	Y	边长	点号	X	Y	边长
J1	3969422.229	40501072.71	5.49	J20	3969357.39	40501234.437	3.67	J39	3969251.573	40501402.318	2.07	J58	3969221.965	40501423.252	1.59	J77	3969177.936	40501468.995	17.47	J96	3969163.244	40501430.136	0.43	J115	3969192.767	40501403.231	2.07				
J2	3969420.225	40501077.821	10.32	J21	3969355.852	40501237.765	4.92	J40	3969250.081	40501403.759	2.07	J59	3969223.155	40501424.846	2.6	J78	3969182.185	40501461.617	43.46	J97	3969163.941	40501430.581	3.09	J116	3969194.266	40501401.808	2.06				
J3	3969416.413	40501087.414	24.25	J22	3969354.135	40501241.4	0.93	J41	3969248.589	40501405.192	2.06	J60	3969221.931	40501422.55	7.55	J79	3969182.158	40501444.334	5.29	J98	3969166.094	40501432.798	0.53	J117	3969195.763	40501400.397	2.05				
J4	3969407.659	4050109.548	12.88	J23	3969352.717	40501249.175	4.13	J42	3969247.097	40501406.518	2.06	J61	3969214.43	40501423.41	1.76	J80	3969185.695	40501437.691	15.91	J99	3969166.411	40501432.372	1.16	J118	3969197.258	40501398.999	0.88				
J5	3969402.704	40501121.917	7.86	J24	3969351.235	40501249.025	0.48	J43	3969245.604	40501409.435	2.06	J62	3969213.157	40501424.619	1.94	J81	3969187.313	40501428.694	15.89	J100	3969167.111	40501431.442	2.59	J119	3969198.748	40501397.611	1.16				
J6	3969399.816	40501129.222	12.24	J25	3969351.058	40501249.475	6.17	J44	3969244.113	40501409.446	2.05	J63	3969211.758	40501425.958	1.33	J82	3969185.463	40501426.554	3.61	J101	3969168.682	40501429.389	6.63	J120	3969200.233	40501396.233	2.02				
J7	3969394.705	40501141.437	6.89	J26	3969348.562	40501255.165	84.54	J45	3969242.521	40501410.849	0.87	J64	3969210.372	40501427.299	1.92	J83	3969182.917	40501417.782	5.38	J102	3969172.836	40501424.22	6.63	J121	3969200.233	40501396.233	2.02				
J8	3969392.861	40501148.072	20.12	J27	3969348.839	40501257.575	3.39	J46	3969242.521	40501410.849	3.47	J65	3969209.409	40501428.642	1.91	J84	3969182.917	40501417.782	4.9	J103	3969172.162	40501419.194	6.63	J122	3969201.716	40501394.861	0.59				
J9	3969383.938	40501166.1	3.08	J28	3969348.839	40501257.575	4.08	J47	3969240.316	40501413.336	1.04	J66	3969207.642	40501429.988	1.9	J85	3969181.424	40501412.533	5.28	J104	3969172.836	40501418.367	1.15	J123	3969202.151	40501394.861	7.16				
J10	3969383.113	40501169.069	17	J29	3969348.839	40501257.575	4.13	J48	3969239.344	40501413.915	1.67	J67	3969206.299	40501431.337	1.89	J86	3969180.82	40501412.533	73.49	J105	3969172.836	40501416.779	2.16	J124	3969201.436	40501387.339	51.24				
J11	3969377.183	40501184.976	2.37	J30	3969348.839	40501257.575	4.68	J49	3969238.156	40501415.022	2.03	J68	3969204.973	40501432.69	1.89	J87	3969182.917	40501417.782	16.83	J106	3969180.82	40501413.635	7.15	J125	3969196.239	40501386.366	23.55				
J12	3969376.084	40501187.113	3.91	J31	3969348.839	40501257.575	0.82	J50	3969236.671	40501416.402	1.33	J69	3969203.664	40501434.948	1.89	J88	3969181.424	40501418.367	0.38	J107	3969182.917	40501413.635	2.14	J126	3969193.855	40501387.339	1.86				
J13	3969374.765	40501190.789	4.02	J32	3969348.839	40501257.575	47.7	J51	3969235.699	40501417.303	6.96	J70	3969202.373	40501435.413	1.87	J89	3969181.424	40501418.367	2.02	J108	3969182.917	40501413.635	2.14	J127	3969193.855	40501387.339	3.41				
J14	3969373.493	40501194.571	4.03	J33	3969348.839	40501257.575	7.15	J52	3969230.504	40501421.932	13.21	J71	3969201.1	40501436.781	1.88	J90	3969181.424	40501418.367	0.94	J109	3969182.917	40501413.635	2.13	J128	3969193.855	40501387.339	20.49				
J15	3969372.03	40501198.262	4.03	J34	3969348.839	40501257.575	9.3	J53	3969228.439	40501423.584	6.56	J72	3969201.1	40501436.781	1.88	J91	3969181.424	40501418.367	0.76	J110	3969182.917	40501413.635	2.11	J129	3969193.855	40501387.339	4.24				
J16	3969370.643	4050200.16	1.64	J35	3969348.839	40501257.575	5.82	J54	3969226.643	40501423.584	3.3	J73	3969201.1	40501436.781	1.88	J92	3969181.424	40501418.367	11.45	J111	3969182.917	40501413.635	2.01	J130	3969193.855	40501387.339	6.65				
J17	3969370.075	4050200.16	4.05	J36	3969348.839	40501257.575	2.94	J55	3969225.521	40501423.584	2.37	J74	3969201.1	40501436.781	1.88	J93	3969181.424	40501418.367	69.41	J112	3969182.917	40501413.635	7.01	J131	3969193.855	40501387.339	35.39				
J18	3969368.686	4050200.16	0.89	J37	3969348.839	40501257.575	2.09	J56	3969224.368	40501423.584	6.07	J75	3969201.1	40501436.781	11.45	J94	3969181.424	40501418.367	31.34	J113	3969182.917	40501413.635	0.29	J132	3969193.855	40501387.339	0.5				
J19	3969368.377	4050200.16	28.31	J38	3969348.839	40501257.575	2.08	J57	3969223.87	40501423.584	5.42	J76	3969201.1	40501436.781	2.63	J95	3969181.424	40501418.367	1.77	J114	3969182.917	40501413.635	1.78	J133	3969193.855	40501387.339	3.4				
J20	3969357.39	4050234.437		J39	3969348.839	40501257.575		J58	3969223.906	40501423.584		J77	3969201.1	40501436.781		J96	3969181.424	40501418.367		J115	3969182.917	40501413.635		J134	3969193.855	40501387.339					

南岸地块1界址点坐标表				南岸地块1界址点坐标表				南岸地块1界址点坐标表				南岸地块1界址点坐标表				南岸地块1界址点坐标表				南岸地块1界址点坐标表				南岸地块1界址点坐标表				南岸地块1界址点坐标表				南岸地块1界址点坐标表				南岸地块1界址点坐标表			
点号	X	Y	边长	点号	X	Y	边长	点号	X	Y	边长	点号	X	Y	边长	点号	X	Y	边长	点号	X	Y	边长	点号	X	Y	边长	点号	X	Y	边长	点号	X	Y	边长				
J134	3969218.552	40501378.141	3.91	J153	3969266.451	40501325.877	3.06	J172	3969304.589	40501269.521	3.88	J191	3969336.246	40501207.616																									